

STEWART ISLAND

Kerbside Recycling Collection Services

Do the right thing,

REDUCE REUSE RECYCLE



RAKIURA RESOURCE RECOVERY CENTRE (RRC)

Has facilities for separating your waste into not only recyclables but also:

- Greenwaste
- Food scraps
- Refuse (non recyclable)
- Hazardous waste
- 2nd chance goods

COLLECTION DAY

Place your recycle bin, food scraps bucket and official pre-paid refuse bag at the roadside gate by 8.00am on collection day – **NOT THE NIGHT BEFORE.**

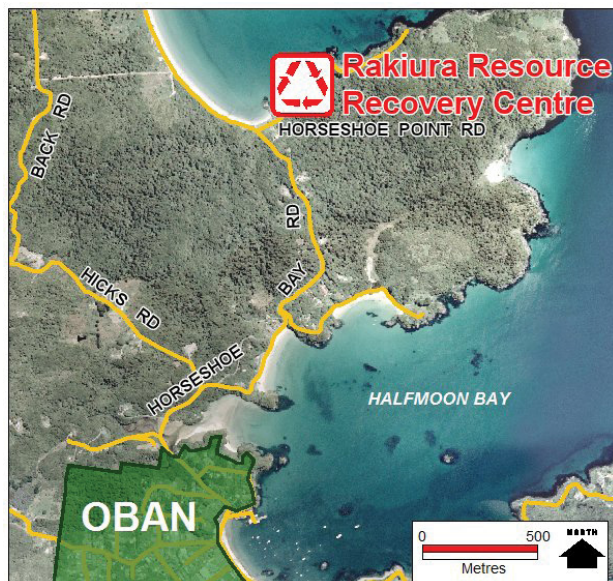
SAFETY

Please consider the safety of runners, pedestrians and other road users when putting the bin, bucket and bag. Place in a safe location where it is obvious to all road users.

REMEMBER

- Do not overfill the bin, bucket or bag
- Carefully wrap any sharp objects

WHERE IS THE RRC?



OPENING HOURS 1:30PM - 4:30PM

Monday, Wednesday, Thursday, Friday, Saturday

CONTACT INFORMATION

RRC 03 219 1581 or

Southland District Council

0800 732 732

www.southlanddc.govt.nz



Stewart Island

Kerbside Recycling Collection Services



Do the right thing...

REDUCE

REUSE

RECYCLE



Separate your waste into...

RECYCLABLES

Thank you for recycling



PAPER & CARDBOARD

flatten, tie together & place in plastic bag (to keep the rain out)

- Newspaper
- Junk mail
- Office paper
- Magazines
- Cereal boxes
- Flyers



DO NOT INCLUDE

- Food contaminated paper
- Hard covered books
- Photographs

ALL PLASTIC BOTTLES

wash, squash & place in plastic bag

- Plastics marked 3 and over
- Shopping Bags
- Bread bags
- Bubble wrap
- Plastic wrap
- Ice Cream Containers (Clean)
- Margarine & Semi Soft Containers (Clean)
- Yogurt Pottles (Clean)
- Polystyrene



DO NOT INCLUDE:

- Unwashed bottles

CANS

wash, squash & place empty cans in plastic bag

- Aluminium cans
- Steel cans



DO NOT INCLUDE

- Aluminium foil
- Unrinsed cans

GLASS

wash (place in the bottom of the bin)

- All bottles and jars



DO NOT INCLUDE:

- Unwrapped broken glass
- Unrinsed glass

IMPORTANT

- Please either bag or tie securely the recyclables, to minimise them becoming windblown litter
- Do not overfill the bin.

SAFETY

- Do not throw out sharp objects, like knives or broken glass, or any hazardous material, such as needles, in your rubbish bags please.
- You can drop off any sharp objects to the Rakiura Resource Recovery Centre.

FOOD SCRAPS

- Kitchen scraps
- Wet paper
- Vegetable & fruit peelings
- Food residuals
- Coffee grounds, tea leaves/bags



DO NOT INCLUDE

- Bones
- Recyclables
- Excess liquid
- Plastics or aluminium foil
- Cleaning agents or non-organic material
- Meat or fish
- Mussel, oyster shells & Cray Bodies
- Citrus fruit or skins
- Onions or their skins.

OFFICIAL PRE-PAID REFUSE BAG

- Disposable nappies
- Bones
- Rubber items
- Items made from mixed materials

DO NOT INCLUDE

- HOT ashes
- Recyclables
- Liquid
- Hazardous waste (like used oil)



NO HAZARDOUS MATERIALS

The RRC has facilities for the disposal of hazardous materials (like solvents, garden & pest chemicals, vehicle batteries, and kitchen and oven cleaners).